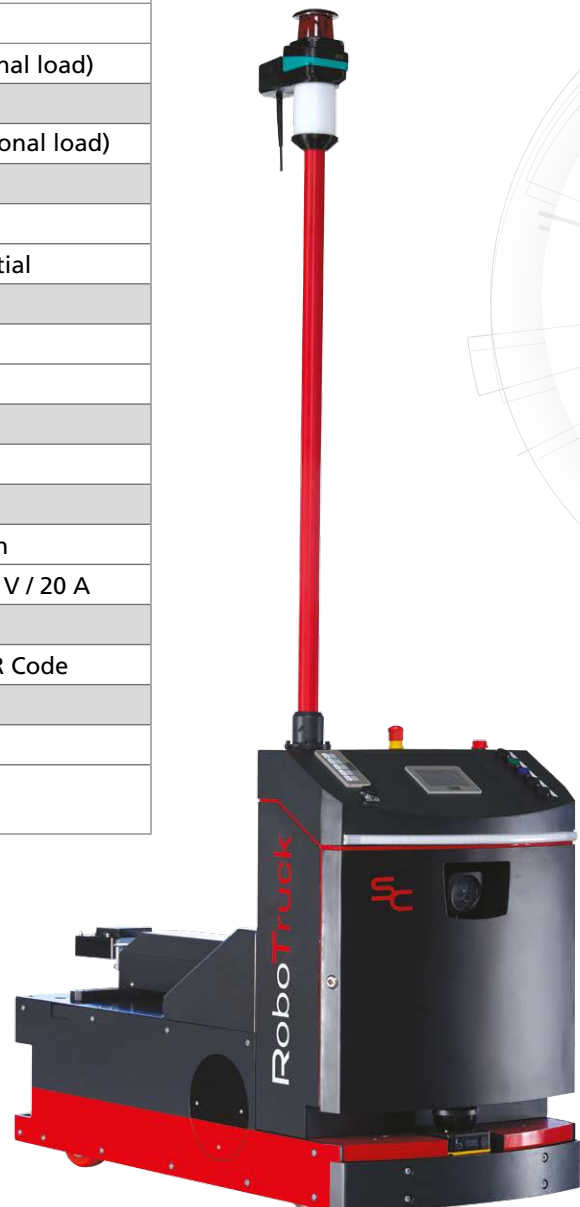


MODEL SERIES

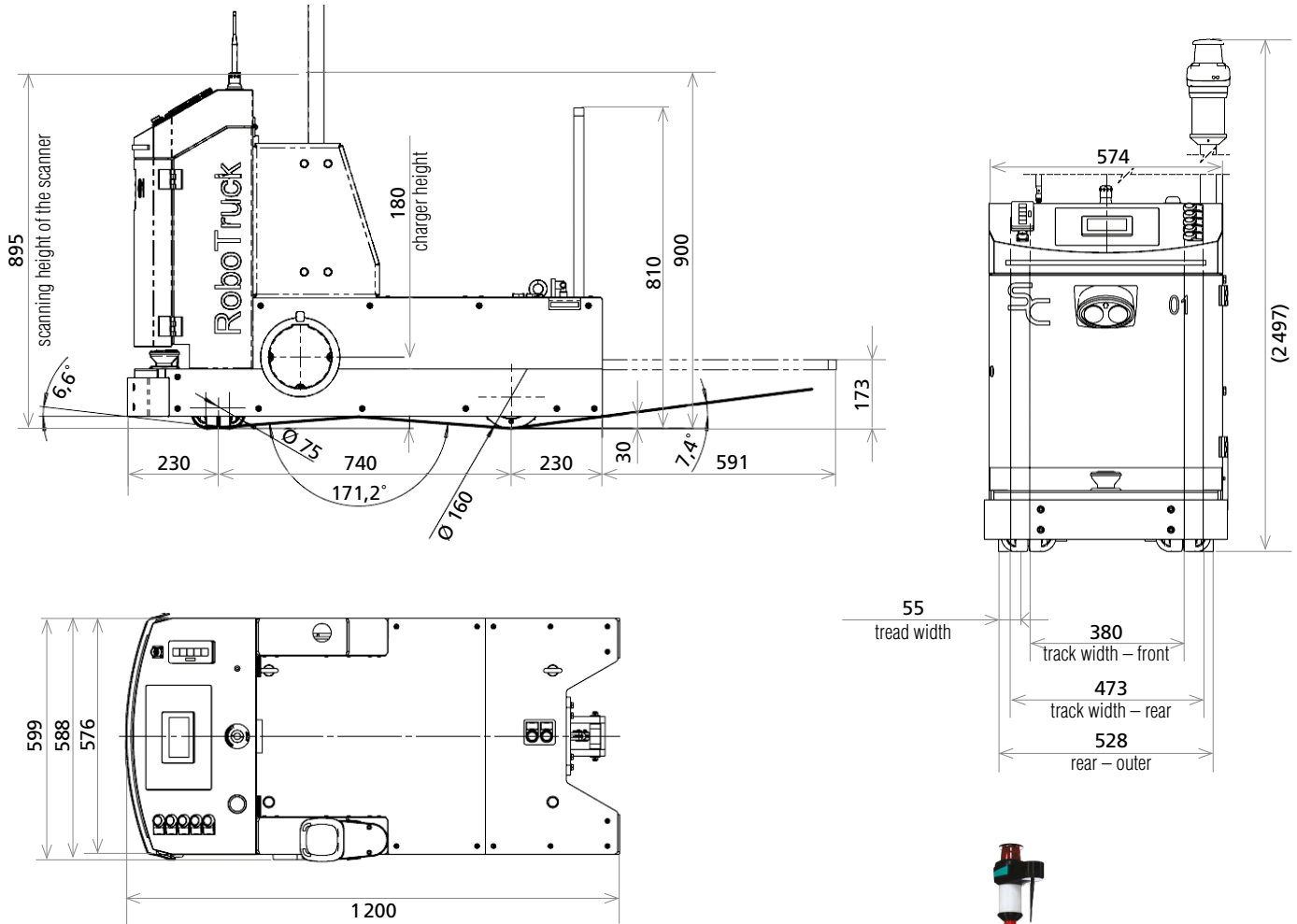
AGV/AMR ROBOTRUCK

The AGV/AMR of the RoboTruck model series is an autonomous vehicle intended for towing sets of wagons, produced in various modifications for a given customer application.

AGV/AMR ROBOTRUCK	
Dimensions	
Length	1 200 mm
Width	600 mm
Height	900 mm
Clearance height	30 mm
Weight	225 kg (325 kg s with additional load)
Payload	
Towing capacity	3 000 kg (5 000 kg s with additional load)
Move	
Speed	1,2 m/s
Move / Drive	Bidirectional / Differential
Customer extension	
Extension	Yes
Type extension	Automatic hitch
Safety	
Safety devices	1 scanner 270°
Power	
Battery	LiFePO4 / 48 V / 80 Ah
Charger	Wireless charging station 48 V / 20 A
Navigation	
Type of navigation	Magnetic tape / SLAM / QR Code
Environment	
IP class	IP 20
Ambient temperature range	10-45 °C



RoboTruck – basic configuration



AGV/AMR RoboTruck can be designed exactly according to the needs of the customer. AGV/AMRs can be retrofitted with automatic train coupling.

ServisControl s.r.o. confirms that **4IGV s.r.o., Czech Republic**, demonstrates the capability to provide consulting, installation, and support services for ServisControl, as well as a commitment to further education, and is therefore certified as a **ServisControl PARTNER**.



Office address

4IGV s.r.o.
 Vlastibořská 2787/5
 P3 logistics parks
 193 00 Prague 20
 Horní Počernice

Company

headquarters
4IGV s.r.o.
 Haštalská 1072/6
 110 00 Prague 1
 IČ: 11796715

+420 732 603 712
 +420 732 170 289
 +420 605 750 271
 info@4igv.cz
www.4igv.cz